

## DC PASS

# GPS Series

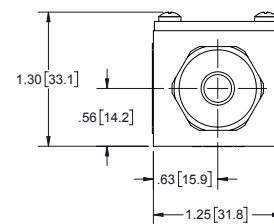
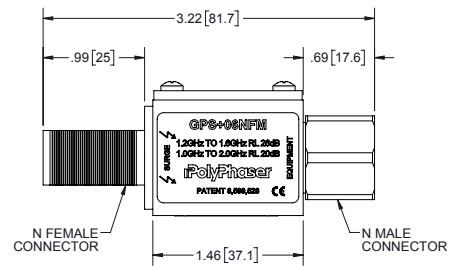
### RF Surge Protection For GPS Applications

PolyPhaser's GPS series integrates fast acting, non-degrading SASD technology into our new DC Pass family of RF surge protectors. Unlike gas tube arrestors that degrade with each lightning strike, the PolyPhaser SASD technology ensures reliable, dependable and tested performance.



## FEATURES

- Frequency Range 1.2 GHz to 1.6 GHz
- Multiple Connector Options
- Reliable SASD (Silicon Avalanche Suppression Diode) Protection
- Ultra Low Voltage and Energy Let Through
- Weatherized Bulkhead Mount
- Protects against ESD discharges on fleet based GPS Systems
- IP67 rated
- CE and RoHS Compliant



GPS+06NFM

## SPECIFICATIONS

	GPS+06NFSF	GPS+06NFF	GPS+06NFM
Voltage	6 Vdc	6 Vdc	6 Vdc
Maximum Surge (single)	15 kA	15 kA	15 kA
Maximum Surge (multiple)	10 kA	10 kA	10 kA
Frequency Range	1.2 GHz to 1.6 GHz	1.2 GHz to 1.6 GHz	1.2 GHz to 1.6 GHz
Technology	SASD	SASD	SASD
Insertion Loss	≤0.1 dB	≤0.1 dB	≤0.1 dB
Weatherized	Yes	Yes	Yes
Mount	Bulkhead	Bulkhead	Bulkhead
Connector	SMA-Female   N-Type Female	N-Type Female   N-Type Female	N-Type Female   N-Type Male